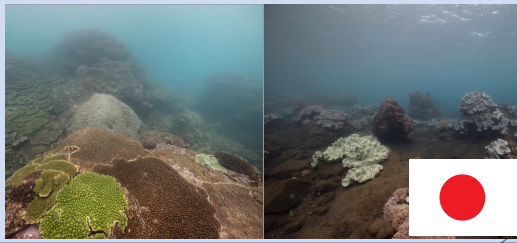


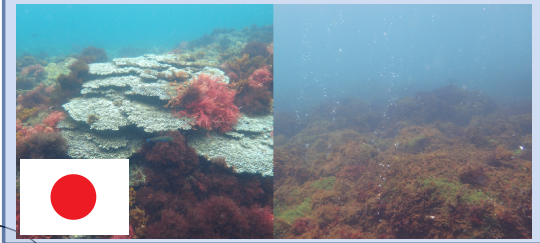
### Iwotorishima CO<sub>2</sub> seep



Coral Reef

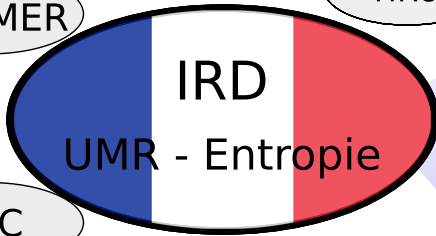


### Shikine CO<sub>2</sub> seep



Warm Temperate

IFREMER



UNC

Tokyo U.

Ryukyu U.

AIST

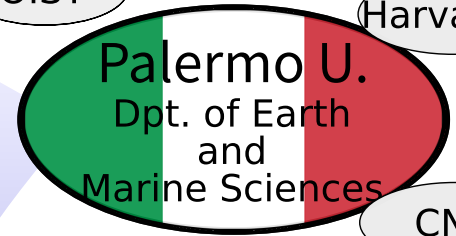
HKU

U. of Tsukuba

Shimoda Marine Research Center

OIST

Harvard U.

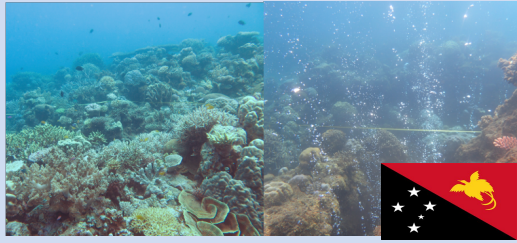


CNR

## Natural Analogue Best Practices

Promoting Open Science

### Milne Bay CO<sub>2</sub> seep



Coral Reef

## Ecosystemic Response of Marine Ecosystems

Biodiversity  
Ecosystem Functions  
Resilience

## Conservation and SDGs

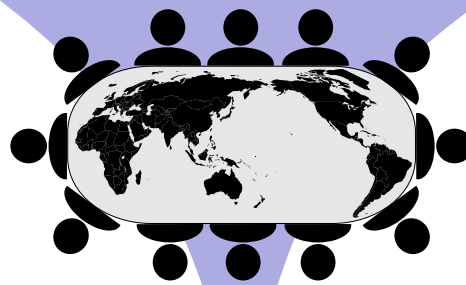
Management Strategies  
Ocean Literacy

### Vulcano CO<sub>2</sub> seep



Mediterranean Ecosystem

### Bourake Semi-enclosed Bay



### Nikko Semi-enclosed Bay



## Fostering the next generation



Young Principal Investigator

Young PI lead research

Researcher and Student Exchange

Student exchange, MOU, Internship, Joint research

Basic Exchange

Joint seminar, Open Symposium, Workshops, Summer school

14 LIFE BELOW WATER

